

The Israel MS Society

The Association Registration number: 58-000-5890

The Israel MS society provides services to persons with MS and their families belonging to the diverse sectors of population that make up the State of Israel: Hebrew, Arab, Russian, English speaking persons.

האגודה הישראלית
לטרשת נפוצה (ע"ר)

الجمعية الإسرائيلية للتصلب المتعدد

The Israel Multiple Sclerosis Society

Израильская ассоциация рассеянного склероза



The IMSS publishes in 4 languages & All services are provided in 4 languages. The Society adapts its activities to meet the various requirements and customs of the various sectors & different minorities.

The Israel MS society activities

01

27 Support groups facilitated by professional psychologists & social workers in Hebrew, Arabic, Russian

The support groups operate throughout the country. The groups meet once every two, three or four weeks & some 30-35 patients & family members participate in each meeting. These meetings provide an opportunity to relieve tensions, share problems & get advice & encouragement.

02

Peer counseling group

in which patients who have had special training provide telephone counseling to other patients. The counselors meet once a month for training.

03

Hotline

run by a coordinator & specially trained operators, who handle incoming & outgoing calls to/from patients & members of their families.

04

Community social worker

individual & community information & counseling, help with referrals to government agencies, home visits.

05

Russian language social worker for new immigrants

individual & community information & counseling, home visits.

06

20 Social Work students in their internship year

the students from the universities - Jerusalem, Haifa, Sapir College, Mivchar College (Orthodox - Bnei Brak - connected to Haifa University) Ashkelon college. Are trained by the society for 1 year & provide individual treatments in Hebrew, Arabic & Russian to hundreds of MS clients in the homes of members & the Society's offices. after this year the students go into the workplace familiar with MS & the special needs of MS clients.

07

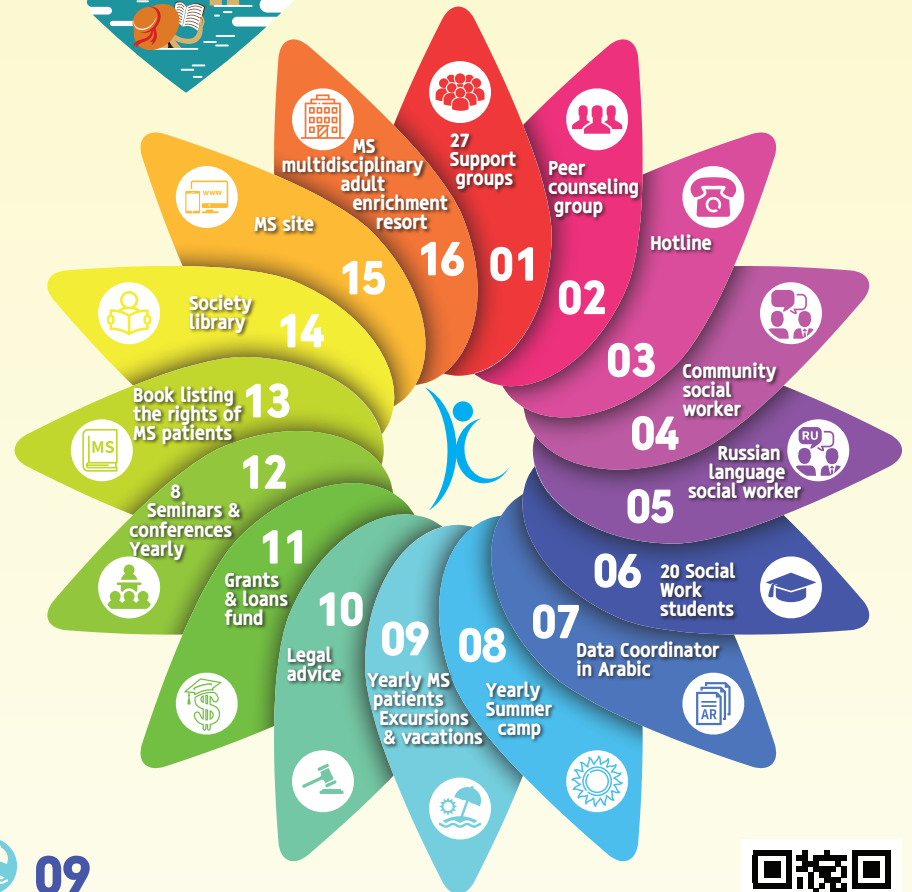
Data Coordinator in Arabic

individual information & counseling.

08

Yearly summer camp for 170 children of MS patients, summer - since 1997

one-week sleepover camp, the children meet other children with similar experiences & can relieve the tensions that are suppressed during the year at special facilitated workshops.



09

Yearly MS patients Excursions & vacations -since 1997

the Society has set itself the task of enabling 200 members with MS to enjoy a four-day vacation, offering them a refreshing change from the routine of their largely housebound lives, & their inadequate NII pensions.

10

Legal advice

the department is managed by the Society's legal counsel - volunteer.

11

Grants & loans fund

individual financial assistance for air-conditioning, distress buttons, dental care, wheelchairs etc - 3,000 NIS each loan for 30 persons a year.

12

8 Seminars & conferences yearly

on different current issues: Hebrew, Arabic & Russian

13

Book listing the rights of MS patients

The book lists the rights & services in areas such as: healthcare, taxes benefits, welfare, housing, transport, rehabilitation & professional retraining, nursing, leisure services etc. Updated periodically.

14

Society library:

- Information sheets - the Society publishes updated information sheets 6 times a year, in four languages: Hebrew, Arabic, Russian and English
- Annual news book- 300 pages- in Hebrew, Arabic, Russian and English
- Documentary films training & guidance films

15

MS site

at the beginning of May 1999 the Society's site opened at: www.mssociety.org.il. The site was awarded a 5 rating, the highest awarded for Internet sites of its kind in Israel & has more than 70,000 visitors each year.

16

In planning Setting up a multidisciplinary adult enrichment resort for people with MS & other neurological diseases

many MS patients are cut off from the most basic health services, such as physiotherapy, speech therapy, occupational therapy, sex counseling, dental care etc. MS patients & their families need a warm home where under one roof, patients & their families can receive a variety of multi-disciplinary services to alleviate their suffering.



The Executive Board of the Israeli MS Society

Board of Directors

Ambassador **Michael Shiloh**
honorary chairman

Ambassador **Zalman Shoval**

Basketball Coach **David Blatt**
honorary chairman

Mr. **Uri Nissan** accountant, treasurer
and acting chairman

Adv. **Amir Tytunovich**
legal adviser

Ms. **Hanita Zentner**
honorary secretary

Professor
Abraham B. Yehoshua

Mr. **Eli Dagan** Agronomist

Professor **Michael Sela**
March .3.1924- May.27.2022
Prof. Sela serves as the active president of
the IMSS, developed the Copaxone drug.
The development of the Copaxone drug
by Prof. Sela has contributed and helped
millions of MS patients in Israel & around
the world and influenced the course of
their physical and mental illness that has
contributed to their quality of life and the
lives of their families. May he rest in
peace.

Ms. **Ruth Dayan**
March.6.1917- Feb.5.2021
May she rest in peace Ms. Dayan served
as Vice Chairperson of the IMSS, Helped &
promoted the rights of persons with M.S.
without distinction of religion, race & gender

Management

Ms. **Janine Vosburgh**
Director of social services

Medical Advisory Board - Board of Directors

Dr. **Ron Milo**
Senior neurologist, neurological dept. &
MS Institute, Barzilai, Medical Center,
Ashkelon

Professor **Dimitrios Karussis**
vice chairman on the medical advisory board
Head of the MS center,
Hadassah Ein Kerem Medical Center,
Jerusalem

Professor **Oded Abramsky**
Senior physician, department of neurology,
Hadassah Ein Kerem Medical Center,
Jerusalem

Dr. **Ibraheem Abu Salameh**
Head of the MS center,
Soroka Medical Center, Beer Sheva

Dr. **Alkrenawi Marwan**
Senior neurologist, Barzilai Medical center,
Ashkelon

Dr. **Olga Azrilin**
Neurological department.
Senior neurologist, Galilee Medical Center.

Professor **Tamir Ben-Hur**
Head of the department of neurology,
Hadassah Ein Kerem Medical Center, Jerusalem

Professor **Joab Chapman**
Professor and Chairman of Neurology
Sheba Medical Center
Chair in Mental and Neurological Diseases
Sackler Faculty of Medicine, Tel Aviv
University

Dr. **Tali Drori**
Head of the Neuroimmunology Service,
Neuroimmunology Clinic,
Sheba Medical Center, Tel-Hashomer

Dr. **Ronit Galili Mosberg**
Neurology Specialist, Herzliya Medical Center

Dr. **Esther Ganelin Cohen**
Head of the Clinic of Neuroimmunology
Senior child neurologist, Schneider

Children's Medical Center of Israel,
Petah Tikva

Professor **Ronit Gilad**
Head of the department of neurology,
Kaplan Medical Center, Rehovot

Dr. **Daniel Golan**
Head, Multiple Sclerosis and
Neuroimmunology Clinic Nazareth
Towers, Clalit Health Services. Vice Chair,
Department of Neurology Carmel Medical
Center, Haifa, Israel. Clinical Lecturer,
Technion, Israel Institute of Technology.

Professor **Bella Gross**

Dr. **Yuval Karmon**
Head of the MS center,
Meir Hospital, Kfar-Saba

Professor **Arnon Karni**
Head of the neuro-immunology clinic & MS
center, Sourasky Medical Center, Tel Aviv

Dr. **Hadar Kolb**
Senior Neurologist, Neuro-Immunology
Unit, Sourasky Medical Center, Tel Aviv.

Professor **Ariel Miller**
Head of the MS center, Carmel Medical
Center, Haifa

Dr. **Maya Graty Ofir**
Director of the neurology department, Bnai
Zion Medical Center, Haifa

Dr. **Michael Osherov**
Senior neurologist, neurological dept. & MS
clinic, Barzilai, Medical Center, Ashkelon

Dr. **Panayiota Petrou**
Senior neurologist, the MS center,
Hadassah Ein Kerem Medical Center,
Jerusalem

Dr. **Yoav Piura**
Senior neurologist, the neuro-immunology
center, Sourasky medical center, Tel Aviv
neuro-immunology clinic, Assuta hospital,
Ashdod

Dr. **Keren Regev**
Head of the MS Services Sourasky Medical
Center, Tel Aviv

Dr. **Yoav Piura**
Senior neurologist, the neuro-immunology
center,
Sourasky medical center, Tel Aviv
neuro-immunology clinic, Assuta hospital,
Ashdod

Dr. **Ayal Rozenberg**
The MS center,
Rambam Health Care Campus, Haifa

Dr. **Hanna Rawashdeh**
Deputy director of the department of
neurology, Carmel Medical Center, Haifa
Head of the neurology center,
Holy Family Hospital, Nazareth

Dr. **Radi Shahien**
Head of the department of neurology,
Rebecca Sieff Hospital, Safed

Dr. **Alla Shifrin**
Head of the MS clinic & senior neurologist
department of neurology, Rambam Health
Care Campus, Haifa.

Dr. **Nour Eddine Yaghmour**
Specialist in Neurology, Neuroimmunology
and Vascular Neurology, The MS center,
Hadassah Ein Kerem Medical Center,
Jerusalem

Professor
Adi Vaknin-Dembinsky
Senior neurologist, the MS center,
Hadassah Ein Kerem Medical Center,
Jerusalem

Professor **Boaz Weller**
Senior neurologist, MS specialist

Dr. **Ofir Zmira**
Director of the neurology &
neuroimmunology department, Hillel Yaffe,
Medical Center, Hadera

7500 Persons with MS registered with the IMSS



"Just the Way I am" by Mirage

Dedicated to persons with MS and in honor of their families & caregivers worldwide.

The music clip created by the IMSS celebrates the beauty within each one of us and advances the vision of a world free of prejudice and oppression of others due to their physical challenges, or their religious, ethnic or gender identity.

ONE day soon we will realize the hope - that a cure will be found.
TODAY we all must work to promote quality of life for persons with MS.
Together we can win the battle against all expressions of narrow -
mindness, disrespect, injustice, bigotry and shaming.

UNITED, WE CAN OVERCOME ALL OBSTACLES AND MAKE A CHANGE!

I AM
COURAGES



Scan to see the Clip
Mirage - "Just the Way I am"

'We are all uniquely beautiful and perfect
Just the way we are'

Today, each one of us can say:

"I am not my pain, I am not my struggle
I am stronger than ever
I am perfect just the way I am"

i BELIEVE
IN MYSELF

The Israel MS Society thanks the Pharma Co. for their support of the activities dedicated to the welfare of MS persons in Israel



The Israel MS Society

16 Homa Umigdal st., Tel Aviv 6777116, Israel 972-3-5377002 agudaims@mssociety.org.il www.mssociety.org.il