

The Israel MS Society

The Association Registration number: 58-000-5890

The Israel MS society provides services to persons with MS belonging to the diverse sectors of population that make up the State of Israel: Hebrew, Arab, Russian, English speaking persons.

האגודה הישראלית
לטרשת נפוצה (ע"ר)
الجمعية الإسرائيلية للتصلب المتعدد
The Israel Multiple Sclerosis Society
Израильская ассоциация рассеянного склероза



The IMSS publishes in 4 languages & All services are provided in 4 languages. The Society adapts its activities to meet the various requirements and customs of the various sectors & different minorities.

The Israel MS society activities

01

27 Support groups facilitated by professional psychologists & social workers in Hebrew, Arabic, Russian

The support groups operate throughout the country. The groups meet once every two, three or four weeks & some 30-35 patients & family members participate in each meeting. These meetings provide an opportunity to relieve tensions, share problems & get advice & encouragement.

02

Peer counseling group

in which patients who have had special training provide telephone counseling to other patients. The counselors meet once a month for training.

03

Hotline

run by a coordinator & specially trained operators, who handle incoming & outgoing calls to/from patients & members of their families.

04

Community social worker

individual & community information & counseling, help with referrals to government agencies, home visits.

05

Russian language social worker for new immigrants

individual & community information & counseling, home visits.

06

20 Social Work students in their internship year

the students from the universities - Jerusalem, Haifa, Sapir College, Mivchar College (Orthodox - Bnei Brak - connected to Haifa University) Ashkelon college. Are trained by the society for 1 year & provide individual treatments in Hebrew, Arabic & Russian to hundreds of MS clients in the homes of members & the Society's offices. after this year the students go into the workplace familiar with MS & the special needs of MS clients.

07

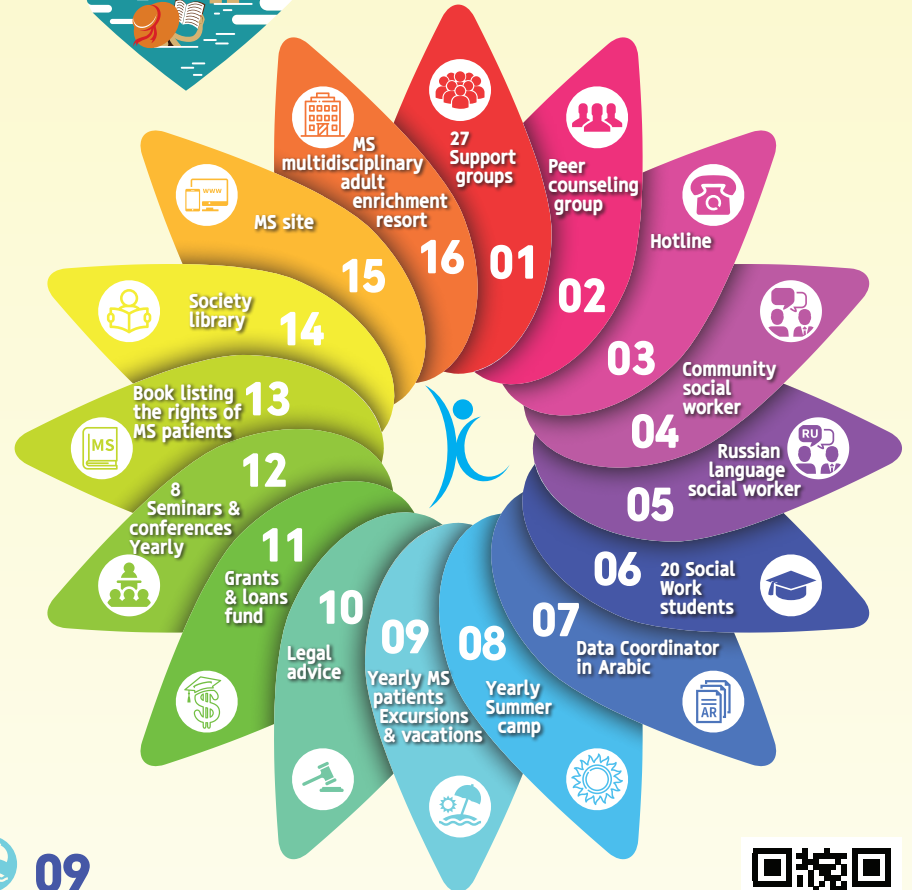
Data Coordinator in Arabic

individual information & counseling.

08

Yearly summer camp for 170 children of MS patients, summer - since 1997

one-week sleepover camp, the children meet other children with similar experiences & can relieve the tensions that are suppressed during the year at special facilitated workshops.



09

Yearly MS patients Excursions & vacations -since 1997

the Society has set itself the task of enabling 200 members with MS to enjoy a four-day vacation, offering them a refreshing change from the routine of their largely housebound lives, & their inadequate NII pensions.

10

Legal advice

the department is managed by the Society's legal counsel - volunteer.

11

Grants & loans fund

individual financial assistance for air-conditioning, distress buttons, dental care, wheelchairs etc - 3,000 NIS each loan for 30 persons a year.

12

8 Seminars & conferences yearly

on different current issues: Hebrew, Arabic & Russian

13

Book listing the rights of MS patients

The book lists the rights & services in areas such as: healthcare, taxes benefits, welfare, housing, transport, rehabilitation & professional retraining, nursing, leisure services etc. Updated periodically.

14

Society library:

- Information sheets - the Society publishes updated information sheets 6 times a year, in three languages: Hebrew, Arabic, Russian
- Annual news book- 300 pages- in Hebrew, Arabic, Russian
- Documentary films training & guidance films

15

MS site

at the beginning of May 1999 the Society's site opened at: www.mssociety.org.il. The site was awarded a 5 rating, the highest awarded for Internet sites of its kind in Israel & has more than 70,000 visitors each year.

16

In planning Setting up a multidisciplinary adult enrichment resort for people with MS & other neurological diseases

many MS patients are cut off from the most basic health services, such as physiotherapy, speech therapy, occupational therapy, sex counseling, dental care etc. MS patients & their families need a warm home where under one roof, patients & their families can receive a variety of multi-disciplinary services to alleviate their suffering.



The Executive Board of the Israeli MS Society

Board of Directors

Professor
Michael Sela
honorary president
Weizmann Institute of Science,
department of immunology, Rehovot

Basketball Coach
David Blatt
honorary chairman

Ambassador
Michael Shiloh
honorary chairman

Ms. **Ruth Dayan**
vice chairperson

Mr. **Uri Nissan**
accountant, treasurer and acting
chairman

adv.
Amir Tytunovich
legal adviser

Ms. **Hanita Zentner**
honorary secretary

Ambassador
Zalman Shoval

Professor
Abraham B. Yehoshua

Mr. **Eli Dagan**
Agronomist

Management

Ms. **Janine Vosburgh**
Director of social services

Medical Advisory Board – Board of Directors

Dr. **Ron Milo**
chairman on the medical advisory board
Head of the department of neurology,
Barzilai Medical Center, Ashkelon

Professor **Dimitrios Karussis**
vice chairman on the medical advisory board
Head of the MS center,
Hadassah Ein Kerem Medical Center,
Jerusalem

Professor **Oded Abramsky**
Senior physician, department of neurology,
Hadassah Ein Kerem Medical Center,
Jerusalem

Dr. **Ibraheem Abu Salameh**
Head of the MS center,
Soroka Medical Center, Beersheba

Dr. **Olga Azrilin**
Neurological department.
Senior neurologist, Galilee Medical
Center.

Professor **Tamir Ben-Hur**
Head of the department of neurology,
Hadassah Ein Kerem Medical Center, Jerusalem

Professor **Joab Chapman**
Professor and Chairman of Neurology
Sheba Medical Center
Chair in Mental and Neurological Diseases
Sackler Faculty of Medicine, Tel Aviv
University

Dr. **Tali Drori**
Head of the Neuroimmunology Service,
Neuroimmunology Clinic,
Sheba Medical Center, Tel-Hashomer

Dr. **Ronit Galili Mosberg**
Neurology Specialist, Herzliya Medical Center

Dr. **Esther Ganelin Cohen**
Head of the Clinic of Neuroimmunology
Senior child neurologist, Schneider
Children's Medical Center of Israel,
Petah Tikva

Professor **Ronit Gilad**
Head of the department of neurology,
Kaplan Medical Center, Rehovot

Professor **Bella Gross**

Dr. **Mark Hellmann**
Head of the MS center,
Rabin Medical Center, Petah Tikva

Dr. **Yuval Karmon**
Head of the MS center,
Meir Hospital, Kfar-Saba

Dr. **Arnon Karni**
Head of the neuro-immunology center,
Sourasky Medical Center, Tel Aviv

Professor **Ariel Miller**
Head of the MS center,
Carmel Medical Center, Haifa

Dr. **Panayiota Petrou**
Senior neurologist, the MS center,
Hadassah Ein Kerem Medical Center,
Jerusalem

Dr. **Keren Regev**
Head of the MS Servicen Sourasky Medical
Center, Tel Aviv

Dr. **Ayal Rozenberg**
The MS center,
Rambam Health Care Campus, Haifa

Dr. **Hanna Rawashdeh**
Deputy director of the department of
neurology, Carmel Medical Center, Haifa
Head of the neurology center,
Holy Family Hospital, Nazareth

Dr. **Radi Shahien**
Head of the department of neurology,
Rebecca Sieff Hospital, Safed

Dr. **Alla Shifrin**
The MS center & department of
neurology, Rambam Health Care Campus,
Haifa

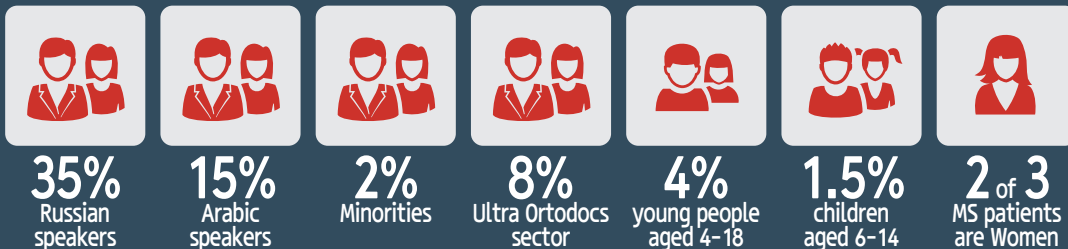
Dr. **Nour Eddine Yaghmour**
Specialist in Neurology, Neuroimmunology
and Vascular Neurology, The MS center,
Hadassah Ein Kerem Medical Center,
Jerusalem

Professor
Adi Vaknin-Dembinsky
Senior neurologist, the MS center,
Hadassah Ein Kerem Medical Center,
Jerusalem

Professor **Boaz Weller**
Head of the department of neurology,
Bnai Zion Medical Center, Haifa



5000 Persons with MS registered with the IMSS



"Just the Way I am" by Mirage

Dedicated to persons with MS and in honor of their families & caregivers worldwide.

The music clip created by the IMSS celebrates the beauty within each one of us and advances the vision of a world free of prejudice and oppression of others due to their physical challenges, or their religious, ethnic or gender identity.

ONE day soon we will realize the hope – that a cure will be found.
TODAY we all must work to promote quality of life for persons with MS.
Together we can win the battle against all expressions of narrow -
mindness, disrespect, injustice, bigotry and shaming.

UNITED, WE CAN OVERCOME ALL OBSTACLES AND MAKE A CHANGE!

I AM
COURAGES



Scan to see the Clip
Mirage – "Just the Way I am"

'We are all uniquely beautiful and perfect
Just the way we are'

Today, each one of us can say:

"I am not my pain, I am not my struggle
I am stronger than ever
I am perfect just the way I am"

I BELIEVE
IN MYSELF

The Israel MS Society thanks the Pharma Co. for their support of the activities dedicated to the welfare of MS persons in Israel



The Israel MS Society

16 Homa Umigdal st., Tel Aviv 6777116, Israel 972-3-5377002 agudaims@netvision.net.il www.mssociety.org.il