

The Israel Multiple Sclerosis Society

האגודה הישראלית לטרשת נפוצה
 מניקה שירותים לאלפי חולים ו בני משפחות בישראל
 The Israel Multiple Sclerosis Society
 Израильская ассоциация рассеянного склероза
 الجمعية الإسرائيلية للتصلب المتعدد
 +972 - 3 - 53 77 002
 agudaims@netvision.net.il
 www.mssociety.org.il



The Israel Multiple Sclerosis society provides services to persons with MS belonging to the diverse sectors of population that make up the State of Israel: Hebrew, Arab, Russian, English speaking persons.



The IMSS publishes in 4 languages & All services are provided in 4 languages. The Society adapts its activities to meet the various requirements and customs of the various sectors & different minorities.

The Israel MS society activities

01 27 Support groups facilitated by professional psychologists & social workers in Hebrew, Arabic, Russian

The support groups operate throughout the country. The groups meet once every two, three or four weeks & some 30- 35 patients & family members participate in each meeting. These meetings provide an opportunity to relieve tensions, share problems & get advice & encouragement.

02 Peer counseling group in which patients who have had special training provide telephone counseling to other patients. The counselors meet once a month for training.

03 Hotline run by a coordinator & specially trained operators, who handle incoming & outgoing calls to/from patients & members of their families.

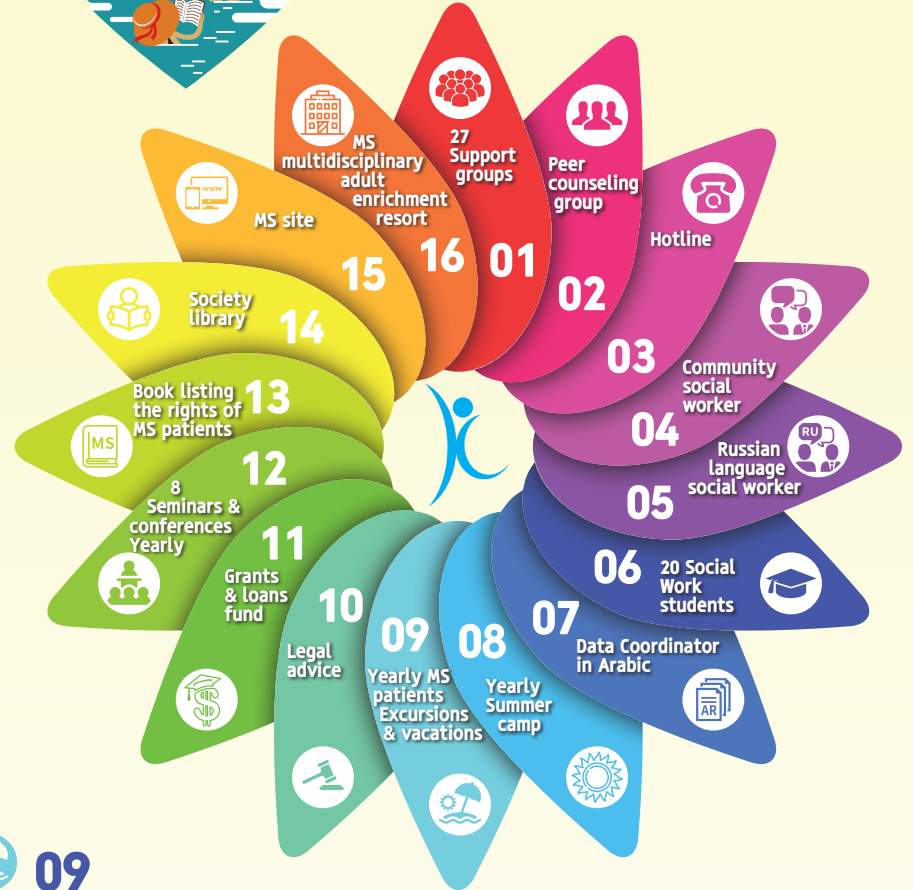
04 Community social worker individual & community information & counseling, help with referrals to government agencies, home visits.

05 Russian language social worker for new immigrants individual & community information & counseling, home visits.

06 20 Social Work students in their internship year the students from the universities - Jerusalem, Haifa, Sapir College, Mivchar College (Orthodox - Bnei Brak - connected to Haifa University) Ashkelon college. Are trained by the society for 1 year & provide individual treatments in Hebrew, Arabic & Russian to hundreds of MS clients in the homes of members & the Society's offices. after this year the students go into the workplace familiar with MS & the special needs of MS clients.

07 Data Coordinator in Arabic individual information & counseling.

08 Yearly summer camp for 170 children of MS patients, summer - since 1997 one-week sleepover camp, the children meet other children with similar experiences & can relieve the tensions that are suppressed during the year at special facilitated workshops.



09 Yearly MS patients Excursions & vacations -since 1997

the Society has set itself the task of enabling 200 members with MS to enjoy a four-day vacation, offering them a refreshing change from the routine of their largely housebound lives, & their inadequate NII pensions.

10 Legal advice the department is managed by the Society's legal counsel - volunteer.

11 Grants & loans fund individual financial assistance for air-conditioning, distress buttons, dental care, wheelchairs etc - 3,000 NIS each loan for 30 persons a year.

12 8 Seminars & conferences yearly on different current issues: Hebrew, Arabic & Russian

13 Book listing the rights of MS patients The book lists the rights & services in areas such as: healthcare, taxes benefits, welfare, housing, transport, rehabilitation & professional retraining, nursing, leisure services etc. Updated periodically.

14 Society library: Information sheets - the Society publishes updated information sheets 6 times a year, in three languages: Hebrew, Arabic, Russian
 Annual news book- 300 pages- in Hebrew, Arabic, Russian
 Documentary films training & guidance films

15 MS site at the beginning of May 1999 the Society's site opened at: www.mssociety.org.il The site was awarded a 5 rating, the highest awarded for Internet sites of its kind in Israel & has more than 70,000 visitors each year.

16 In planning Setting up a multidisciplinary adult enrichment resort for people with MS & other neurological diseases many MS patients are cut off from the most basic health services, such as physiotherapy, speech therapy, occupational therapy, sex counseling, dental care etc. MS patients & their families need a warm home where under one roof, patients & their families can receive a variety of multi-disciplinary services to alleviate their suffering.

6000 persons with MS live in Israel
 4800 are registered with the Israel Ms society
 30% Russian speakers 15% Arabic speakers

The Israel Multiple Sclerosis Society

האגודה הישראלית לטרשת נפוצה
 מניקה שירותים לאלפי חולים ו בני משפחות בישראל
 The Israel Multiple Sclerosis Society
 Израильская ассоциация рассеянного склероза
 الجمعية الإسرائيلية للتصلب المتعدد
 +972 - 3 - 53 77 002
 agudaims@netvision.net.il
 www.mssociety.org.il



The Israel Multiple Sclerosis society provides services to persons with MS belonging to the diverse sectors of population that make up the State of Israel: Hebrew, Arab, Russian, English speaking persons.



The IMSS publishes in 4 languages & All services are provided in 4 languages. The Society adapts its activities to meet the various requirements and customs of the various sectors & different minorities.

Scan to see the Web Site



The Executive Board of the Israeli Multiple Sclerosis Society

Board of Directors

- Professor
Michael Sela
 honorary president
 Weizmann Institute of Science, department of immunology, Rehovot
- Basketball Coach
David Blatt, honorary chairman
 Israel MS Ambassador
- Ambassador
Michael Shiloh
 honorary chairman
- Ms. **Hanita Zentner**
 honorary secretary
- Mr. **Uri Nissan**
 accountant, treasurer and acting chairman
- adv.
Amir Tytunovich
 legal adviser
- Ms. **Ruth Dayan**
 vice chairperson
- Ambassador
Zalman Shoval
- Mr. **Eli Dagan**
 Agronomist
- Professor
Abraham B. Yehoshua
- Management**
- Ms. **Janine Vosburgh**
 Executive director & director of social services

Medical Advisory Board - Board of Directors

- Dr. **Ron Milo**
 chairman on the medical advisory board
 Head of the department of neurology, Barzilai Medical Center, Ashkelon
- Professor **Dimitrios Karussis**
 vice chairman on the medical advisory board
 Head of the multiple sclerosis center, Hadassah Ein Kerem Medical Center
- Professor **Oded Abramsky**
 Senior physician, department of neurology, Hadassah Ein Kerem Medical Center, Jerusalem
- Dr. **Ibraheem Abu Salameh**
 Head of the multiple sclerosis center, Soroka Medical Center, Beersheba
- Professor **Tamir Ben-Hur**
 Head of the department of neurology, Hadassah Ein Kerem Medical Center, Jerusalem
- Professor **Joab Chapman**
 Professor and Chairman of Neurology Sheba Medical Center
 Chair in Mental and Neurological Diseases Sackler Faculty of Medicine, Tel Aviv University, Israel.
- Dr. **Ronit Galili Mosberg**
 Neurology Specialist, Herzliya Medical Center
- Dr. **Esther Ganelin Cohen**
 Head of the Clinic of Neuroimmunology Senior child neurologist, Schneider Children's Medical Center

Professor **Ronit Gilad**
 Head of the department of neurology, Kaplan Medical Center, Rehovot

Professor **Bella Gross**
 Head of the department of neurology, Galilee Medical Center, Nahariya

Professor **Ariel Miller**
 Head of the multiple sclerosis center, Carmel Medical Center, Haifa

Dr. **Panayiota Petrou**
 Senior neurologist, the multiple sclerosis center, Hadassah Ein Kerem Medical Center, Jerusalem

Dr. **Ayal Rozenberg**
 The multiple sclerosis center, Rambam Health Care Campus, Haifa

Dr. **Hanna Rawashdeh**
 Deputy director of the department of neurology, Carmel Medical Center, Haifa
 Head of the neurology center, Holy Family Hospital, Nazareth

Dr. **Radi Shahien**
 Head of the department of neurology, Rebecca Sieff Hospital, Safed

Dr. **Alla Shifrin**
 The multiple sclerosis center & department of neurology, Rambam Health Care Campus, Haifa

Professor
Adi Vaknin-Dembinsky
 Senior neurologist, the multiple sclerosis center, Hadassah Ein Kerem Medical Center

Professor **Boaz Weller**
 Head of the department of neurology, Bnai Zion Medical Center, Haifa



Dr. **Mark Hellmann**
 Head of the multiple sclerosis center, Rabin Medical Center

Dr. **Yuval Karmon**
 Head of the multiple sclerosis center, Meir Hospital, Kfar Saba

Dr. **Arnon Karni**
 Head of the neuro-immunology center, Sourasky Medical Center, Tel Aviv

Survey of the Israel MS society

The purpose of this Survey was to examine the perceptions and views of multiple sclerosis patients as to the Israel MS Society & the treatments available for the disease



Scan to see the Survey



Survey of the Israel MS society

The Survey was designed to examine the attitudes of members of the MS Society towards receipt of material from the Society via mail & email.



Scan to see the Survey



"Just the Way I am" by Mirage

Dedicated to persons with MS and in honor of their families & caregivers worldwide.

The music clip created by the IMSS celebrates the beauty within each one of us and advances the vision of a world free of prejudice and oppression of others due to their physical challenges, or their religious, ethnic or gender identity.

ONE day soon we will realize the hope – that a cure will be found.
 TODAY we all must work to promote quality of life for persons with MS.
 Together we can win the battle against all expressions of narrow -
 mindedness, disrespect, injustice, bigotry and shaming.

UNITED, WE CAN OVERCOME ALL OBSTACLES AND MAKE A CHANGE!

I AM COURAGES



Scan to see the Clip
 Mirage – "Just the Way I am"

"We are all uniquely beautiful and perfect
 Just the way we are"

Today, each one of us can say:

"I am not my pain, I am not my struggle
 I am stronger than ever
 I am perfect just the way I am"

I BELIEVE
 IN MYSELF